

60c  
in Canada 70¢

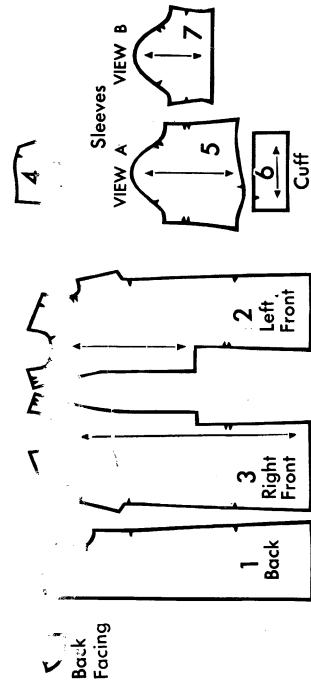
Butterick

QUICK  
'N EASY

HALF-SIZES  
12½ 14½ 16½ 18½ 20½ 22½

3014 Q'nE...SHIRT SHIFT IN HALF SIZES 8 Pieces

Front buttoned shirt shift. Self tie belt. (A) Three-quarter length cuffed sleeves. (B) Short sleeves.



3014	HALF SIZES	12½	14½	16½	18½	20½	22½
VIEW A							
35", 36" Fabric (No Nap)	3 1/2	3 3/4	3 7/8	4	4 1/2	4 1/2	4 1/2
44", 45" " "	3	3 1/8	3 1/8	3 1/4	3 3/8	3 3/8	3 1/2
54" Fabric (No Nap)	2 5/8	2 3/4	2 3/4	2 3/4	2 3/4	2 3/4	2 3/4
VIEW B							
35", 36" Fabric (No Nap)	3 3/8	3 1/2	3 1/2	3 1/2	4 1/8	4 1/8	4 1/8
44", 45" " "	2 7/8	2 7/8	2 7/8	3	3 1/8	3 1/8	3 1/8
VIEWS A AND B							
35" interfacing	1/2	1/2	1/2	1/2	1/2	1/2	1/2

EXTRA FABRIC IS REQUIRED FOR MATCHING STRIPES OR PLAIDS. The above yardage does not allow for shrinkage. Do not use fabric with a diagonal stripe or a decided diagonal weave. Lower Edge Measurement: Size 16½ - 48 Ins.

STANDARD BODY MEASUREMENTS

Size	12½	14½	16½	18½	20½	22½
Bust	33	35	37	39	41	43"
Waist	27	29	31	33	35	37½"
Hip	37	39	41	43	45	47"
Back waist length	15¼	15½	15½	16	16¼	16½"
Finished back length from base of neck to lower edge - 3 in. hem allowed	40½	41	41½	42	42½	43"

NOTIONS NEEDED - Thread. Seam Binding (Optional). 7 Buttons for View A. 5 Buttons for View B.

SUGGESTED FABRICS - Tissue Flannels, Wool Crepes, Linens, Crepes, Jerseys.

THE BUTTERICK COMPANY, INC.  
NEW YORK • LONDON • TORONTO • SYDNEY  
Printed in U.S.A.

88

