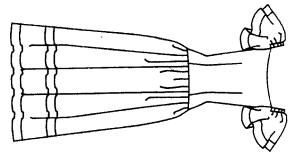


U.S. **\$9.00**
 CAN. **\$10.90**
 AUSTR. **\$10.00**
 N.Z. **\$10.00**
 *suggested price
 *prix suggere

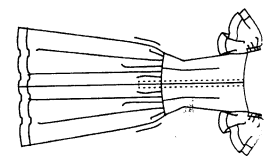
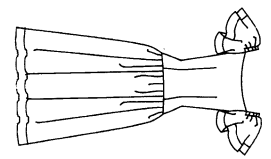
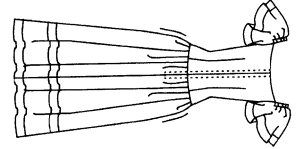
SIZE / TAILLE

10

DEVANT A
FRONT A



DERRENT B
BACK B



MISSSES' DRESS Lined dress, below mid-calf or above ankle has close-fitting dropped waist bodice, dirndl skirt, side pockets, back zipper and bias, above elbow sleeves with stiffening and elastic at cap. Purchased trim and ribbon such as: contrast
NOTIONS: 20" (50cm) Zipper, Seam Binding, Hooks and Eyes; and 1/2 yd (1/2 sm) of 1/4" (6mm) Elastic.
FABRICS: 11 wt. Linen, Silk like Broadcloth, Tissue fabric, Denmark and Lenois Lullula Unsuitable for chamois, diagonals. Allow extra fabric to match plaids or stripes. Use nap yardage/layout; for pile, ribbed or oen way design fabrics: * with nap ** w/o nap

ROBE (Jeune femme) Robe au-dessous du mollet ou au-dessus de la cheville, doublée, avec corsage ajusté et manches biaisées au-dessus du coude, avec élastique, et soutiens aux entournures; jupe froncée montée dans taille basse, poches dans les coutures et glissière dos. Garniture et ceinture en ruban.
A: contraste
MERCERIE: Fermeture à glissière (50cm) - Extra-fort - Agrafes - 0.5m d'élastique (6mm).
TISSUS: Lin léger - Toile fine (sans sole) - Faille (poids plume) - Denims - Lullulas (poids plume) - Grandes diagonales ou convenent pins. Complet non tenu dos. raccords de layure/carréaux * avec: sans ** sans sens.

		6		8		10		12		14		16		18		SIZE		INS		CM	
DRESS A		2 1/2	2 1/2	2 1/2	2 1/2	2 1/2	2 1/2	2 1/2	2 1/2	2 1/2	2 1/2	2 1/2	2 1/2	2 1/2	2 1/2	2 1/2	45	45	115	115	
DRESS B		2 1/2	2 1/2	2 1/2	2 1/2	2 1/2	2 1/2	2 1/2	2 1/2	2 1/2	2 1/2	2 1/2	2 1/2	2 1/2	2 1/2	2 1/2	45	45	115	115	
SATIN RIBBON		2 1/2	2 1/2	2 1/2	2 1/2	2 1/2	2 1/2	2 1/2	2 1/2	2 1/2	2 1/2	2 1/2	2 1/2	2 1/2	2 1/2	2 1/2	60	60	150	150	
CONTRAST		1 1/2	1 1/2	1 1/2	1 1/2	1 1/2	1 1/2	1 1/2	1 1/2	1 1/2	1 1/2	1 1/2	1 1/2	1 1/2	1 1/2	1 1/2	35	35	90	90	
LINING		2 1/2	2 1/2	2 1/2	2 1/2	2 1/2	2 1/2	2 1/2	2 1/2	2 1/2	2 1/2	2 1/2	2 1/2	2 1/2	2 1/2	2 1/2	60	60	150	150	
INTERFACING A,B		2 1/2	2 1/2	2 1/2	2 1/2	2 1/2	2 1/2	2 1/2	2 1/2	2 1/2	2 1/2	2 1/2	2 1/2	2 1/2	2 1/2	2 1/2	36	36	45	45	
WIDTHS		Dress A,B		Dress A,B		Dress A,B		Dress A,B		Dress A,B		Dress A,B		Dress A,B		Dress A,B		Dress A,B		Dress A,B	
LENGTHS		Dress A,B		Dress A,B		Dress A,B		Dress A,B		Dress A,B		Dress A,B		Dress A,B		Dress A,B		Dress A,B		Dress A,B	
à l'ourlet		183		188		183		188		183		188		183		188		183		188	
nuque à ourlet		117		117		117		117		117		117		117		117		117		117	

Vogue 1690

Page 1 (3 pages)

