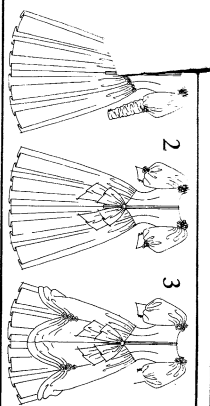


Style 2757 20 PLS  
 Price Code USA  
 D \$10.95



**Misses' Lined Wedding Dresses:** Dresses with fitted paneled bodice have center back, zip closure and gathered paneled skirt from lowered, pointed waistline. All dresses have full trim. Model 1 has button and loop fastening at wrist. Ruffled lower sleeves are attached to full upper sleeves which are gathered at sleeve head. Models 2 and 3 have back bow and short full sleeves gathered into pointed cuffs, with button and loop fastening. Model 3 has overskirt ruffled at panel seams with new trim. **Suggested fabrics:** Crepe, silk, satin, dupion, tulle, moiré and synthetic. No laydowns for matching plaids, checks, stripes or large patterned fabrics. For fabric with nap, pile, shoddy or one-way design, use nap requirements and nap layout. **To complete garment:** Thread, one 55cm (22") zip, one hook and eye, four 3mm (1/8") buttons. Model 1: For roses: 1.60m (1 3/4 yds) of 115cm (45") wide OR 0.90m (1 yd) of 150cm (60") wide fabric in four contrasting colors, 0.7m (3/4 yd) of 60 to 90cm (23 to 36") woven or non-woven interfacing. Model 2: One snap (press stud), for roses: 1.05m (1 1/4 yds) of 150cm (60") wide fabric in four contrasting colors. Models 2 and 3: 0.50m (3/4 yd) of 60 to 90cm (23 to 36") woven or non-woven interfacing.

**Ensembles de Mariage Jeunes Femmes:** Robes avec corsage à découpe ajustée, fermeture à glissière au milieu du dos et jupe à plis et panneau froncée à partir d'une taille basse en pointe. Toutes les robes sont garnies de rose. Modèle 1 avec boutons et boucles au poignet. Les deux manches ruffées, attachées aux bords de la manche amovibles, finies dans le fil de manche. Modèles 2 et 3 avec noué dans le dos et manches courtes; angles froncés dans le poignet au poignet, avec bouton et bande. Modèle 3: une jupe extérieure ruffée aux coutures des panneaux et garnie de roses. **Tissus suggérés:** Crépe, soie, satin, dupion, tulle, moiré et synthétique. Aucun laydown pour correspondre les plaidés, carreaux, rayures ou motifs à grand motif. Pour les tissus à nap, à pile, à shoddy ou à sens unique, utiliser les exigences de nap et la disposition. **Compléter le vêtement:** Fil, une fermeture à glissière de 55cm (22"), une aiguille, quatre boutons de 3mm (1/8"). Pour les roses: 1.60m (1 3/4 yds) de tissu en 115cm (45") de largeur. OU 0.90m (1 yd) de tissu en 150cm (60") de largeur. une épingle, quatre boutons de 3mm (1/8") pour les roses. 1.05m (1 1/4 yds) de tissu en 150cm (60") de largeur. OU 0.50m (3/4 yd) de tissu en 150cm (60") de largeur. une pression (bouton pression), Modèle 3: Une pression (bouton pression), Modèles 2 et 3: 0.50m (3/4 yd) de tissu en 150cm (60") de largeur. une épingle en quatre couleurs.

Size / Cms	6	8	10	12	14	16	18
Mod. 1 Dress	115 cm**	7.00	7.00	7.05	7.10	7.15	7.20
Robe	150 cm*	5.30	5.35	5.35	5.40	5.40	5.40
Lining	140 cm*	5.50	5.50	5.50	5.55	5.60	5.65
Neil	115 cm*	0.40	0.40	0.40	0.40	0.40	0.40
Mod. 2 Dress	115 cm**	8.25	8.25	8.30	8.35	8.35	8.35
Robe	150 cm**	6.05	6.10	6.10	6.15	6.15	6.20
Lining	115 cm**	1.25	1.25	1.25	1.25	1.25	1.25
Neil	150 cm**	0.95	0.95	0.95	0.95	0.95	0.95
Mod. 3 Dress	115 cm**	12.85	12.85	12.85	12.90	12.90	12.90
Robe	150 cm**	9.60	9.75	9.75	9.80	9.80	9.80
Lining	115 cm**	5.50	5.50	5.50	5.55	5.60	5.65
Neil	140 cm	0.40	0.40	0.40	0.40	0.40	0.40

Yds. In.	6	8	10	12	14	16	18
Mod. 1 Dress	45 7/8**	7 3/4	7 3/4	7 3/4	7 7/8	7 7/8	7 7/8
Robe	60 7/8**	5 7/8	5 7/8	5 7/8	6	6	6
Lining	45 7/8**	6 1/8	6 1/8	6 1/8	6 1/8	6 1/8	6 1/4
Neil	54"	1/2	1/2	1/2	1/2	1/2	1/2
Mod. 2 Dress	45 7/8**	9 1/8	9 1/8	9 1/8	9 1/4	9 1/4	9 1/4
Robe	60 7/8**	6 5/8	6 5/8	6 5/8	6 3/4	6 3/4	6 7/8
Lining	45 7/8**	1 3/8	1 3/8	1 3/8	1 3/8	1 3/8	1 3/8
Neil	60 7/8**	1 1/8	1 1/8	1 1/8	1 1/8	1 1/8	1 1/8
Mod. 3 Dress	45 7/8**	12 1/8	12 1/8	12 1/8	12 1/4	12 1/4	12 1/4
Robe	60 7/8**	9 1/8	9 1/8	9 1/8	9 1/8	9 1/8	9 1/8
Lining	45 7/8**	1 1/8	1 1/8	1 1/8	1 1/8	1 1/8	1 1/8
Neil	54"	1/2	1/2	1/2	1/2	1/2	1/2

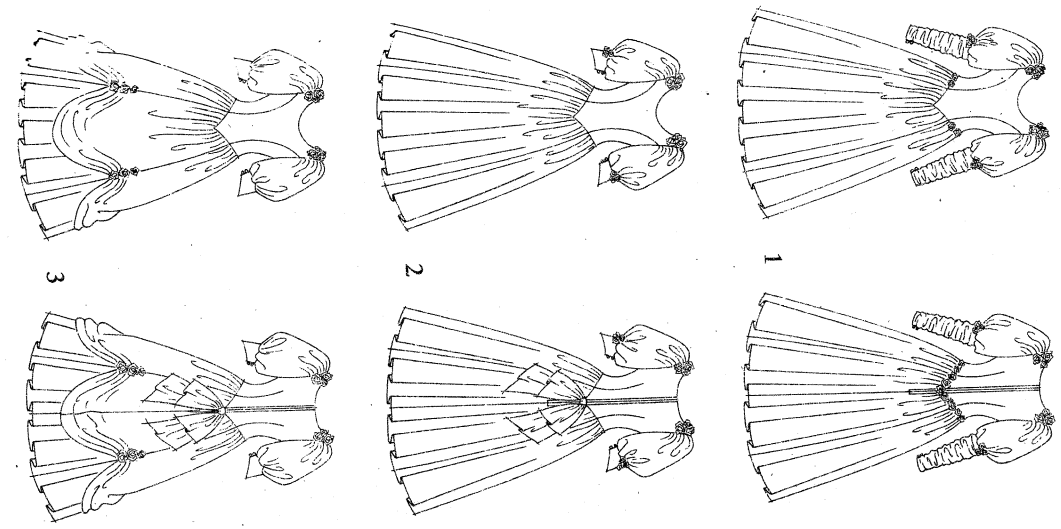
Mod. 1, 2, 3	Dress length	57 1/4	57 3/4	58	58 1/4	58 1/2	58 3/4	59
Mod. 1, 2, 3	Dress width	172 1/4	172 1/4	172 1/4	172 1/4	172 1/4	172 1/4	172 1/4
with nap	with nap	with nap	with nap	with or without nap	with or without nap	with or without nap	with or without nap	with or without nap
with nap	with nap	with nap	with nap	with or without nap	with or without nap	with or without nap	with or without nap	with or without nap

Size	6	8	10	12	14	16	18
Waist	78	80	83	87	92	97	102
Bust	58	61	64	67	71	76	81
Hip	85	88	92	97	102	107	112

Style is a registered trademark of Style Patterns Ltd.  
 Style est la marque déposée et sous licence de Style Patterns Ltd.

PRINTED IN U.S.A.  
 • IMPRIMÉ AUX E.U.

# 2757 ENGLISH



## How

**FIRST PREPARE YOUR PATTERN:**  
 Select the pattern pieces according to the view you are making.

This pattern is made to body measure with ease allowed for comfort. If your body measurements differ from the pattern envelope adjust the fitting lines on the fabric. Check your nap to waist and dress length, alter the pattern. Lengthen or shorten lines as indicated.

**TO LENGTHEN:** Cut pattern between printed lines and place paper underneath. Spread pattern the required amount and pin to paper.

**TO SHORTEN:** Fold at the printed lines to form pleat half the amount to be shortened, i.e. 1.5cm (1/2") deep to shorten 2.5cm (1").

**Cutting La**  
 CUT OUT ALL PIECES BEYOND FOLDED FAB CUT IN POSITIONS AS