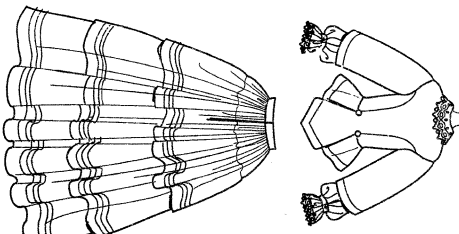
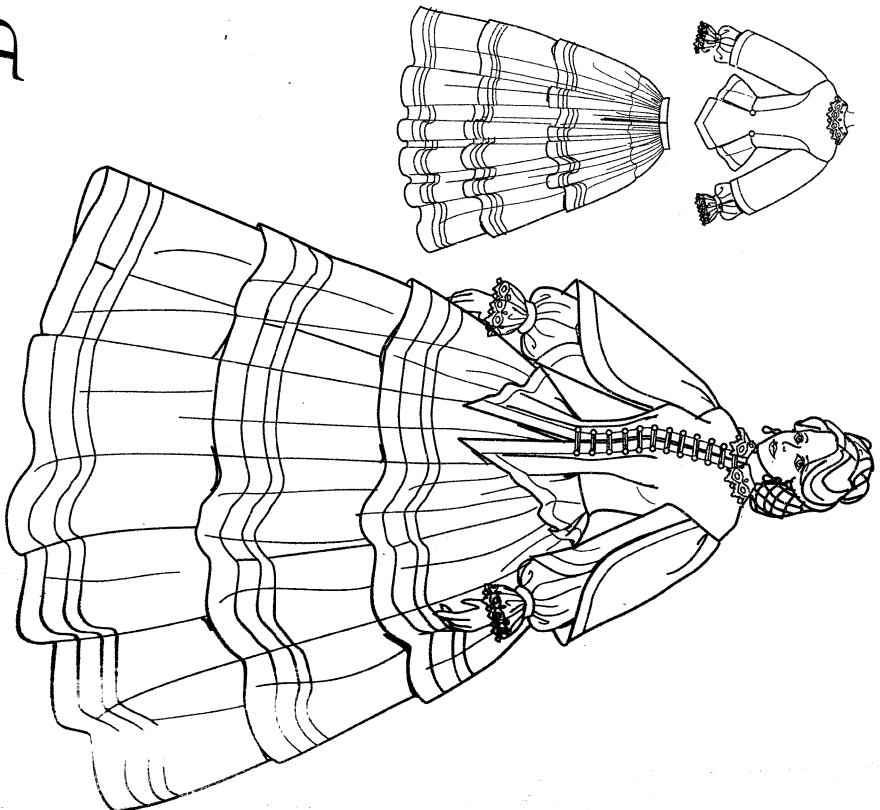


English/Spanish 3

Simplicity® 9761

1/4

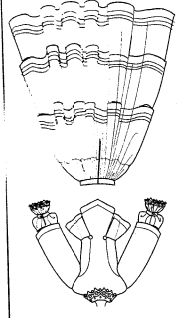


29 pie

This two piece dress was popular in the mid 1850's into the curly 1860's. It is worn over the traditional undergarments of the time, including a waist cinched corset and a crinoline/hoop skirt. The bodice is quite fitted in the waistline area. The armholes are emphasized by exaggerating the width of the shoulders. The armhole is dropped and the resulting hollow between armpit and bosom was filled with the bust pads. The skirt length is based on the standard height of 5' 6". This two piece dress should be worn and fitted over the recommended undergarments. Always test the fit of each garment as it is constructed, as actual fabric can change the way it fits. The wearer should not expect to have a modern freedom of motion.

9761
29 PIECES/PIEZAS

Medidas e instrucciones de costura en Español en el Interior del Patron.



MISSES' COSTUME: These garments are designed to be worn over a crinoline (hoop skirt) and waist cinched corset. Check finished garment measurements carefully.

Fabrics: Two Piece Dress: Silk Taffeta; Lower Sleeves and Collar: Batiste; Underlining and Pad Covers: Polished Cotton. Extra fabric needed to match plaids, stripes or one-way design fabrics.

Notions: Thread, strong thread to match for cartridge pleating (such as nylon machine twist), one spool of size three, eight ply crochet thread (such as J & P Coats Speed-Cro-Sheen) for gathering lower sleeve, tapestry needle. Buttons - twenty four 1/2" shank style to cover for bodice and ten 3/8" for sleeves, one pkg of 1/2" wide cotton twill tape, one pkg of 1/2" wide double fold bias tape, one pkg of 1/2" single fold bias tape; fifteen hook and eyes, eight snaps, disappearing marker, Look for Simplycty notions.

BODY MEASUREMENTS

Bust	32	34	36	38	40	42	44	46	48
Waist	28	30	32	34	36	38	40	42	44
Hip-9" below waist	40	42	44	46	48	50	52	54	56
Back-neck to waist	17	17 1/4	18	18 1/2	19	19 1/2	20	20 1/2	21
Sizes - European	18	18	19	19	20	20	21	21	22

Two Piece Dress

Contrast

45**

Lower Sleeves and Collar- 1/4 of 48**

Top Underlining, Pad Covers and Skirt Lining

7 1/4 7 3/4

Padding- 3/4 yd of 45" polyester batting

Trimnings: Flat Eyelet- 2 1/2 yd of 3" wide for collar and sleeves; Tear away stabilizer for collar- 10" X 20" piece; Feather Boning 1 1/2 yd of 1/8" wide; Satin ribbon- 1/2 yd of 1/8" wide; Cord- 18 1/2 yd of 1/8" wide; Grosgrain Ribbon- 1/2 yd of 1/8" wide; Bias tape- 1/2 yd of 1/2" wide; Cotton twill tape- 1/2 yd of 1/2" wide; Single fold bias tape- 1/2 yd of 1/2" wide; Double fold bias tape- 1/2 yd of 1/2" wide.

Garment Measurements: Bust & Hip - 32, 34, 36, 38, 40, 42, 44, 46, 48
 Top Bust
 Top Waist
 Bust
 Hip
 Back-neck to waist
 Back-neck to waist
 Bust
 Waist

COSTUME POUR JEUNE FEMME

Ces vêtements sont conçus pour être portés par-dessus une crinoline (jupe à cerceaux) et un corset. Vérifiez soigneusement les mesures du vêtement fini.

Tissus: Robe deux-pièces: Taffetas de Soie; Manches inférieures et Col: Batiste; Triple et Housse des renforts: Coton brillant; Pévroyez devantage de tissu pour raccorder les écosais; Tissues des renforts: Coton brillant; Pévroyez devantage de tissu pour raccorder les écosais, rayures ou motifs unidirectionnels.

Mercurie: Fil, fil épais assorti pour les petits pits (tel que fil de nylon torsadé pour machine à coudre), une bobine de fil à crochet à huit brins de la taille trois (tel que J & P Coats Speed-Cro-Sheen) pour les fronces des manches inférieures et une aiguille à tapisserie. Boutons - vingt-quatre boutons à recouvrir de 1.5cm avec tige pour le corsage et dix de 1cm pour les manches, un paquet de talonnette de coton de 1.3cm, un paquet de ruban de biais double de 1.3cm, de large, un paquet de ruban de biais simple de 1.3cm; quinze agrafes, huit pressions, un marqueur à encre invisible. Demandez la mercerie Simplicity.

MESURES NORMALISEES

Poitrine	78	80	83	87	92	97	102	107	112
Taille	58	61	64	67	71	76	81	87	92
Manches (23cm au-dessous de la taille)	39.5	40	40.5	41.5	42	42.5	43	44	44
Dos (encolure à taille)	6	8	10	12	14	16	18	20	20
Tailles Françaises	34	36	38	40	42	44	46	48	48

Robe deux-pièces

115cm**	15.70	15.70	15.80	15.80	15.80	15.90	15.90	15.90	15.90
Parties contrastantes	6.80	6.80	6.80	6.80	6.80	6.90	6.90	6.90	6.90
Manches inférieures et col-1.50m de 115cm** de large	6.80	6.80	6.80	6.80	6.80	6.90	6.90	6.90	6.90
Encolure du Haut, Housse des Renforts et Doubleure de la jupe	7.20	7.20	7.20	7.30	7.30	7.30	7.30	7.40	7.40

ESMÉS DU CŒMENT

121 cm	59.5	62	65	68.5	72.5	77.5	82.5	87.5	92.5
Manches inférieures et col-1.50m de 121cm** de large	6.80	6.80	6.80	6.80	6.80	6.90	6.90	6.90	6.90
Encolure du Haut, Housse des Renforts et Doubleure de la jupe	7.20	7.20	7.20	7.30	7.30	7.30	7.30	7.40	7.40

ESMÉS DE LA JUPÉ

121 cm	59.5	62	65	68.5	72.5	77.5	82.5	87.5	92.5
Manches inférieures et col-1.50m de 121cm** de large	6.80	6.80	6.80	6.80	6.80	6.90	6.90	6.90	6.90
Encolure du Haut, Housse des Renforts et Doubleure de la jupe	7.20	7.20	7.20	7.30	7.30	7.30	7.30	7.40	7.40

1-B-C
 2-B-C
 3-B-C
 4-B-C
 5-P-1
 6-P-1
 7-P-1
 8-P-1
 9-P-1
 10-B
 11-B
 12-F
 13-F
 14-C
 15-C
 16-L