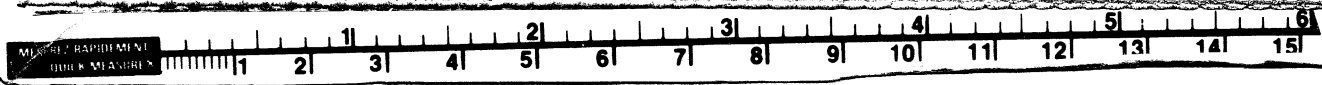
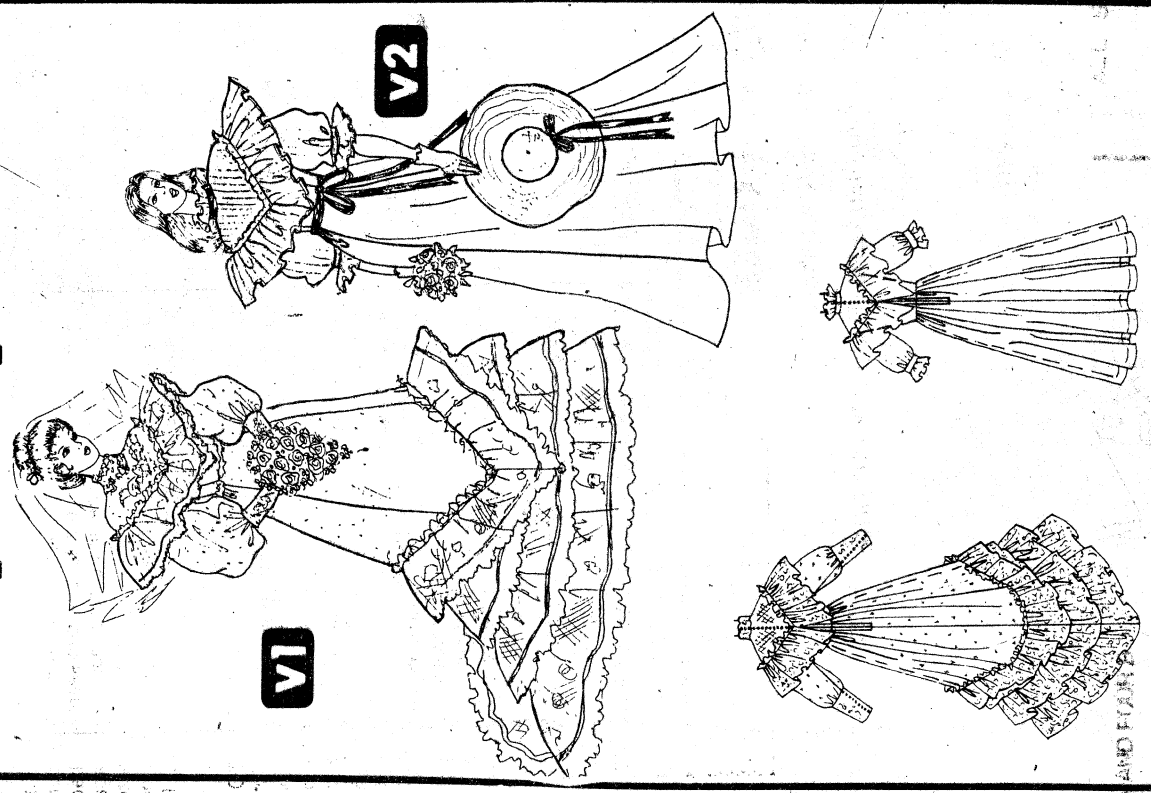


Simplicity 6765

page 1

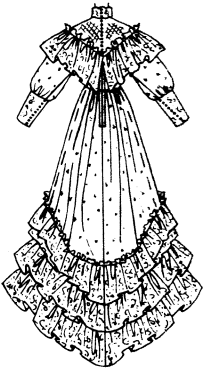


6765

15 PIECES

MISSES' BRIDES' OR BRIDESMAIDS' DRESS: Ruffled dress with gored skirt gathered to bodice has stand-up collar, yoke, loop and button closing above back zipper and ribbon trim. Lace trimmed V. 1 has sleeves gathered to wide cuffs with loop and button closing and back forming train. V. 2 has about elbow length sleeves gathered to form self ruffles.

Fabrics—Dress in: peau de soie, moire, taffeta, satin and satin types. Extra fabric needed to match plaids and stripes. One-way design and satin fabrics: extra fabric may be needed. . . use nap yardage and nap layouts to match. Not suitable for obvious diagonal fabrics.



	30½	31½	32½	34	36	38	Ins.
	23	24	25	26½	28	30	"
	32½	33½	34½	36	38	40	"
	15½	15¾	16	16¼	16½	16¾	"
Sizes U.S.A. ONLY	6	8	10	12	14	16	
Sizes		8	10	12	14	16	
View 1 Dress	44"/45"***	10%	10%	10%	11	11¼	Yds.
Overbodice, sleeves and overskirt—Point d'esprit	44"/45"***	11%	11%	11%	12	12½	Yds.
Yoke, collar and cuffs		1	1	1	1	1½	Yds.
52" / 54" Net or Tulle							
Galloon lace flouncing	8¾" wide	59%	60%	60%	60%	61¼	61¾
Ribbon—¾" wide		59	59½	59¾	60¼	60½	61
Lace trim—¾ yd. of 2" wide; 1½ yds. of ¾" wide.							
View 2 Dress	44"/45"***	8%	8%	8%	8%	8%	Yds.
Overdress—Sheer lengthwise striped fabric	44"/45"***	10	10	10	10¼	10%	Yds.
Ribbon—4¾ yds. of ¾" wide.							
Dress finished back length from base of neck (including train)							
V. 1	89½	89¾	90	90¼	90½	90¾	Ins.
Dress finished back length from base of neck							
V. 2	59½	59¾	60	60¼	60½	60¾	"
Dress width V. 1 or 2 (not including train V. 1)							
	233¾	234¾	235¾	237¼	239¼	241¼	"

Notions: Thread, 14" zipper. V. 1: One lace medallion (approx. 3-¾" x 10-¾"), fifty-seven ¾" button forms (to be covered), 8¾ yds. ½" wide horsehair. V. 2: Twenty-two ¾" button forms (to be covered), 7¾ yds. of ½" wide horsehair.

*without nap **with nap ***with or without nap

ROBE DE MARIEE OU DE DEMOISELLE D'HONNEUR POUR JEUNE FEMME: La robe avec volants et jupe avec godets froncée au corsage a col droit, empiècement, fermeture de brides et boutons par-dessus la glissière-dos et garniture de ruban. V. 1 garnie avec dentelle a manches froncées aux poignets larges avec fermeture de brides et boutons et dos formant traîne. V. 2 a manches environ aux coudes froncées pour former volants en même tissu.

Tissus—Robe en: Peau de soie, tissu moiré, taffetas, satin et genres satin. Prévoyez davantage de tissu pour raccorder écossais et rayures. Pour tissus à motif unidirectionnel et satin: prévoyez davantage de tissu. . . utilisez métrage et plans de coupe "avec sens" pour raccorder. Patron pas prévu pour tissus à diagonales distinctes.

	78	80	83	87	92	97	cm
	58	61	64	67	71	76	"
	83	85	88	92	97	102	"
	39.5	40	40.5	41.5	42	42.5	"
	8	10	12	14	16		
	-	-	-	-	-	-	
	10.00	10.00	10.00	10.00	10.10	10.20	m 115cm**
	10.80	10.80	10.90	10.90	11.00	11.10	m 115cm**
	0.90	0.90	0.90	0.90	1.00	1.00	"
	54.50	54.90	55.20	55.70	56.00	56.40	m
	54.00	54.40	54.70	55.10	55.40	55.80	m
	8.10	8.10	8.10	8.10	8.10	8.10	m 115cm**
	9.10	9.10	9.10	9.40	9.70	9.70	m 115cm**
	227	228	229	229	230	231	cm
	151	152	153	153	154	154	cm
	594	596	597	602	607	612	cm

Fournitures: Fil, glissière de 35cm. V. 1: Un médaillon de dentelle (environ en 9.5cm x 27.5cm), cinquante-sept formes de bouton de 1cm (à couvrir), 7.70m de galon de crin de cheval en 1.3cm de large. V. 2: Vingt-deux formes de bouton de 1cm (à couvrir), 6.50m de galon de crin de cheval en 1.3cm de large.

*sans sens **avec sens ***avec ou sans sens