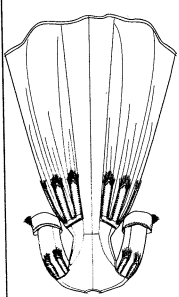
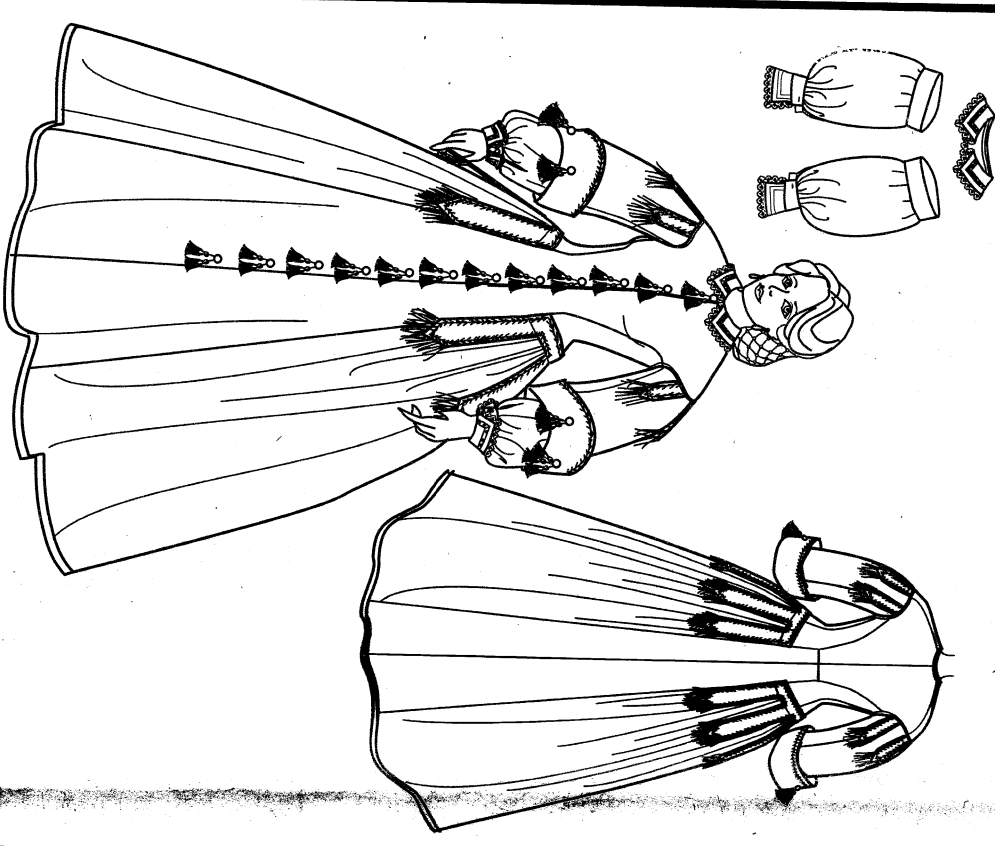


2887  
21 PIECES

English

# Simplicity® 2887

Thank you for purchasing this Simplicity pattern. We have made every effort to provide you with a high quality product.



## MISSES' COSTUME

**Fabrics:** Dress in 54" to 60" (140cm to 150cm) Silk Taffeta, Contrast Cuffs and Tabs in Velvet, Collar and Inner Sleeve Cuffs in 45" (115cm) Cotton Organdy, Inner Sleeves in 45" (115cm) Cottons, Broadcloth, Bodice Lining in 45" (115cm) Polished Cotton, Extra fabric needed to match plaids, stripes or one-way design fabrics.

**Notions:** Thread, sixteen hooks and eyes, two 1/2" buttons for inner sleeves, sixteen 1/2" buttons for front and cuffs, (three to a pkg.) of tiny tassels for front and cuffs, one pkg. of 1/2" wide single fold bias tape for neck edge, one pkg. of 1/2" wide double fold bias tape for inner sleeve, one pkg. of 1/2" wide double fold bias tape for boning.

Look for Simplicity notions and Wrights@ Trims.

## BODY MEASUREMENTS (For Sizing Help Visit www.simplicity.com)

|                    |        |        |        |        |    |        |        |        |        |        |
|--------------------|--------|--------|--------|--------|----|--------|--------|--------|--------|--------|
| Bust               | 31 1/2 | 32 1/2 | 34     | 36     | 38 | 40     | 42     | 44     | 46     | 48     |
| Waist              | 24     | 25     | 26 1/2 | 28     | 30 | 32     | 34     | 37     | 39     | 41     |
| Hip-9" below waist | 33 1/2 | 34 1/2 | 36     | 38     | 40 | 42     | 44     | 46     | 48     | 50     |
| Back-neck to waist | 15 1/2 | 16     | 16 1/2 | 16 1/2 | 17 | 17 1/2 | 17 1/2 | 17 1/2 | 17 1/2 | 17 1/2 |
| Pattern Size       | 8      | 10     | 12     | 14     | 16 | 18     | 20     | 22     | 24     | 26     |
| Sizes-European     | 34     | 36     | 38     | 40     | 42 | 44     | 46     | 48     | 50     | 52     |

## Dress 54" to 60"

|                                |  |    |    |    |    |    |    |    |    |    |
|--------------------------------|--|----|----|----|----|----|----|----|----|----|
| Contrast Cuffs, Tabs and Bands | 1% yd. of 45"  | 8% | 8% | 8% | 8% | 8% | 8% | 8% | 8% | 8% |
| Inner Sleeves and Bands        | 1 1/2 yd. of 45"   | 7% | 7% | 7% | 7% | 7% | 7% | 7% | 7% | 7% |
| Collar and Inner Sleeve Cuffs  | 1/2 yd. of 45"   | 1% | 1% | 1% | 1% | 1% | 1% | 1% | 1% | 1% |
| Bodice Lining                  | 1 1/2 yd. of 45"   | 1% | 1% | 1% | 1% | 1% | 1% | 1% | 1% | 1% |
| Sleeve and Cuff Lining         | 1 1/2 yd. of 45"   | 1% | 1% | 1% | 1% | 1% | 1% | 1% | 1% | 1% |
| Middy Braid                    | 11 1/2 yd. of 1/2" wide; Fringe-2 yd. of 2 1/2" wide     |    |    |    |    |    |    |    |    |    |
| Braid or Ribbon                | 7 yd. of 1/2" wide; Lace Insertion-2 yd. of 1/2" wide    |    |    |    |    |    |    |    |    |    |
| Lace Edging                    | 2 yd. of 1/2" wide; Cording-1 1/2 yd. of 1/2" for piping |    |    |    |    |    |    |    |    |    |

## FINISHED GARMENT MEASUREMENTS (Includes Design and Wearing Ease)

|      |    |    |        |        |        |        |        |        |        |
|------|----|----|--------|--------|--------|--------|--------|--------|--------|
| Bust | 35 | 36 | 37 1/2 | 39 1/2 | 41 1/2 | 43 1/2 | 45 1/2 | 47 1/2 | 49 1/2 |
|------|----|----|--------|--------|--------|--------|--------|--------|--------|

## JEUNE FEMME: COSTUME

**Tissus:** Robe en Taffetas de soie de 140cm à 150cm, Poignets et Pattes contrastantes en Velours, Col et Poignets de manches intérieures en Organdy de coton de 115cm, Manches intérieures en Cotons, Popeline de 115cm, Doubleur du corsage en Coton travaillé de 115cm. Prévoyez davantage de tissu pour raccorder les écussons, rayures ou motifs unidirectionnels.

**Mercerie:** Fil, seize agrafes, deux boutons de 1,3cm pour les manches intérieures, seize boutons de 2,2cm pour le devant et les poignets, seize paquets de petits composants (trois par paquet) pour le devant et les poignets, un paquet de biais de 1,3cm de large pour le bord de l'encolure, un paquet de biais double de 1,3cm de large pour les manches intérieures, un paquet de talonnette pour la baleine.

Demandez à mercerie de Simplicity et les garnitures de Wrights@.

## MESURES NORMALISEES

|  |    |    |    |     |     |     |     |     |     |     |
|--|----|----|----|-----|-----|-----|-----|-----|-----|-----|
| Poitrine                               | 80 | 83 | 87 | 92  | 97  | 102 | 107 | 112 | 117 | 122 |
| Taille                                 | 61 | 64 | 67 | 71  | 76  | 81  | 87  | 94  | 99  | 104 |
| Hanches (23cm au-dessous de la taille) | 88 | 92 | 97 | 102 | 107 | 112 | 117 | 122 | 127 | 132 |
| Dos (encolure à taille)                | 43 | 44 | 45 | 46  | 47  | 48  | 49  | 50  | 51  | 52  |
| Tailles                                | 3  | 5  | 7  | 9   | 11  | 13  | 15  | 17  | 19  | 21  |
| Tailles-Fr.                            | 36 | 38 | 40 | 42  | 44  | 46  | 48  | 50  | 52  | 54  |

## Robe 140cm à 150cm

|   |  |      |      |      |      |      |      |      |      |      |
|---|--|------|------|------|------|------|------|------|------|------|
| Poignets, Pattes et Bandes contrastants | 1.00 m de 115cm**  | 7.00 | 7.00 | 7.20 | 7.30 | 7.40 | 7.50 | 7.60 | 7.70 | 7.80 |
| Manches intérieures et Bandes           | 1.40 m de 115cm**  | 7.00 | 7.00 | 7.20 | 7.30 | 7.40 | 7.50 | 7.60 | 7.70 | 7.80 |
| Col et Poignets de manches intérieures  | 0.20m de 115cm**   | 1.00 | 1.10 | 1.10 | 1.10 | 1.20 | 1.20 | 1.20 | 1.30 | 1.30 |
| Doubleur du corsage                     | 1.15cm**   | 1.00 | 1.10 | 1.10 | 1.10 | 1.20 | 1.20 | 1.20 | 1.30 | 1.30 |
| Doublure de manche et poignet           | 1.60m de 115cm**   | 1.00 | 1.10 | 1.10 | 1.10 | 1.20 | 1.20 | 1.20 | 1.30 | 1.30 |
| Soutache très fine                      | 15.80m de 6mm de large; Frange-2.10m de 5.7cm de large           |      |      |      |      |      |      |      |      |      |
| Soutache ou Ruban                       | 5.50m de 1.5cm de large; Incrustation de dentelle-1.80m de large |      |      |      |      |      |      |      |      |      |
| Baleine en métal                        | 1.40m de 6mm de large  |      |      |      |      |      |      |      |      |      |
| Bupure                                  | 1.80m de 1.5cm de large; Cordlette-1.30m de 3mm de large         |      |      |      |      |      |      |      |      |      |

## MESURES DES VETEMENTS FINI

|          |    |      |    |       |     |     |     |     |     |
|----------|----|------|----|-------|-----|-----|-----|-----|-----|
| Poitrine | 89 | 91.5 | 95 | 100.5 | 106 | 111 | 116 | 121 | 126 |
|----------|----|------|----|-------|-----|-----|-----|-----|-----|

To be used for individual private home use only and not for commercial or manufacturing purposes.