

2881
17 PIECES

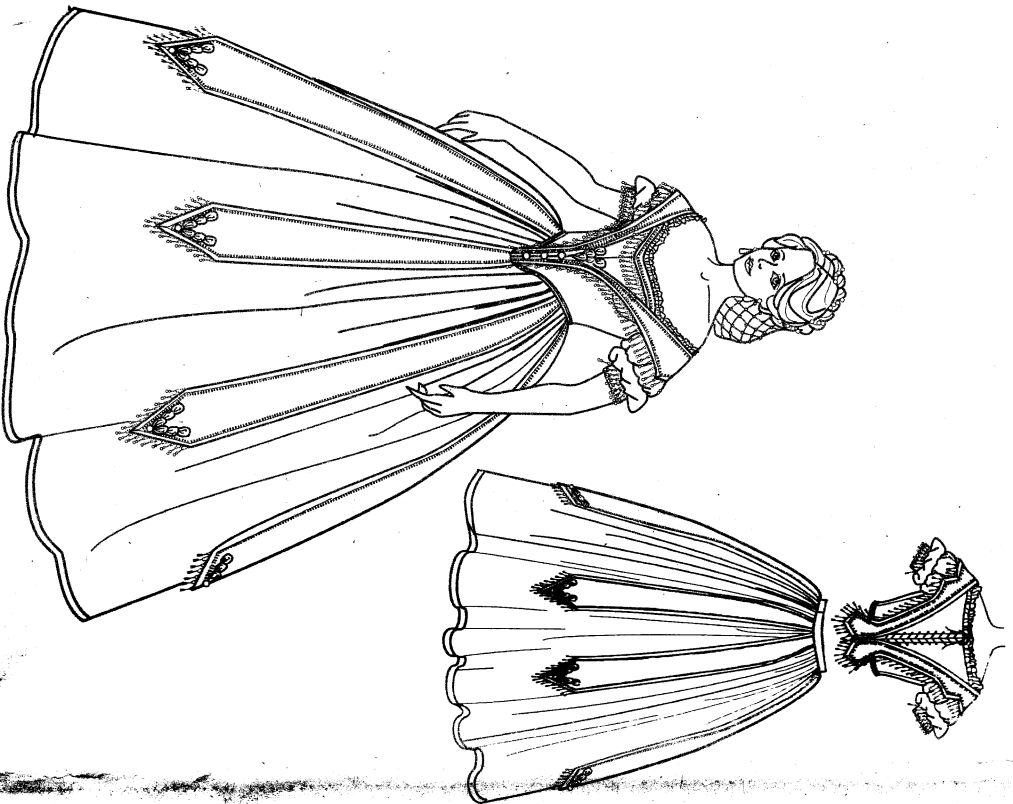
English

Simplicity®

2881

1/4

Thank you for purchasing this Simplicity pattern.
We have made every effort to provide you with a high quality product.



6-2111-VNT136

MISSES' COSTUME

Fabrics: Silk Taffeta, Lightweight Silk, Lining in Cotton Broadcloth.
Extra fabric needed to match plaids, stripes or one-way design fabrics.

Notions: Thread, strong thread to match skirt for pleats, disappearing ink pen, one pkg of 1/2" wide single fold bias tape, one pkg of 1/2" wide twill tape, ten 5/8" buttons to cover, four small hooks and eyes for bodice and two large hooks and eyes for skirt.

Look for Simplicity notions and Wrights@Trims.

BODY MEASUREMENTS

Bust	31% 32% 34	36	38	40	42	44	46	48	50
Waist	24	25	26%	28	30	32	34	37	39
Hip-9" below waist	33%	34%	36	38	40	42	44	46	48
Back-neck to waist	15%	16	16%	17	17%	17%	17%	17%	17%

Sizes-European	34	36	38	40	42	44	46	48	50
Sizes	8	10	12	14	16	18	20	22	24

Costume
54" to 60" 7% 7% 7% 7% 7% 7% 7% 7% 7%
8 Yd
Contrast Petales and Bias Strips - 3 yd. of 54" to 60" 4% 4% 4% 4% 4% 4% 4% 4% 4%
45" Yd
Lining
Interfacing - 1 1/2 yd. of 22" to 36" wide lightweight non-fusible
Braid - 20" yd. of 1/2" wide
Flat Lace - 2 1/2 yd. of 1 1/2" wide
Lace Insertion - 1 1/2 yd. of 1/2" wide
Beaded Fringe - 5 1/2 yd. of 2" wide
Ribbon - 2 1/2 yd. of 1 1/2" wide for bodice; 5 1/2 yd. of 1/2" wide velvet for skirt hem

Cording for Piping and Lacing - 5 1/2 yd. of 1/16" wide
Boning - 2 1/2 yd. of 1/4" wide steel boning
GARMENT MEASUREMENTS (Bust & Hip Printed on Pattern Tissue)
Bust 37 1/2 38 1/2 40 42 44 46 48 50 52
Bodice Waist 28 1/2 29 1/2 30 1/2 31 1/2 32 1/2 33 1/2 34 1/2 35 1/2 36 1/2 37 1/2

JEUNE FEMME: COSTUME

Tissus: Soie, Taffetas, Doublure en Coton, Popeline. Prévoyez davantage de tissu pour raccorder les épaules, les rayures ou les motifs unidirectionnels.

Mercerie: Fil, fil solide assorti à la jupe pour les plis, marqué à encre lavable, un paquet de ruban de biais simple de 1.5cm de large, un paquet de talonnette de coton de 1.5cm de large, dix boutons à recouvrir de 1.5cm, quatre petites agrafes pour le corsage et deux grosses agrafes pour la jupe.

Demandez la mercerie de Simplicity et les garnitures de Wrights@Trims.

MESURES NORMALISEES

Poitrine	80	83	87	92	97	102	107	112	117	122
Taille	61	64	67	71	76	81	87	94	99	
Hanches (23cm au-dessous de la taille)	85	88	92	97	102	107	112	117	122	
Dos (encolure à taille)	40	40.5	41.5	42	42.5	43	44	44	44.5	
Tailles	8	10	12	14	16	18	20	22	24	
Tailles-Françaises	36	38	40	42	44	46	48	50	52	

Costume
140cm à 150cm 7.00 7.00 7.10 7.10 7.10 7.10 7.10 7.10 7.20 7.20 7.30 m
Pétales et Bandes de biais contrastants - 2.80m de 140cm à 150cm**
Doublure
Soutache - 18.50m de 1cm de large
Entourage - 1.20m de 55cm à 90cm de large, léger, thermocollant

Dentelle plate - 2.70m de 3.2cm de large
Incrustation de dentelle - 1.70m de 6mm de large
Frange de perles - 5.90m de 5cm de large
Ruban - 2.20m de 3mm de large pour le corsage; 5.00m de velours de 2cm de large pour l'ourlet de la jupe.
Cordon pour le liseré et le Lagage - 6.00m de 1.5cm de large
Baline - 2.00m de caire d'acier de 6mm de large
MESURES DU VÊTEMENT (Poitrine & Hanches imprimées sur le Patron)
Poitrine 80 83 87 92 97 102 107 112 117 122
Taille 61 64 67 71 76 81 87 94 99 104
Taille du Corsage 66 68 70 73 76 80 83 86.5 89 92 95 98 101 104

To be used for individual private home use only and not for commercial or manufacturing purposes.