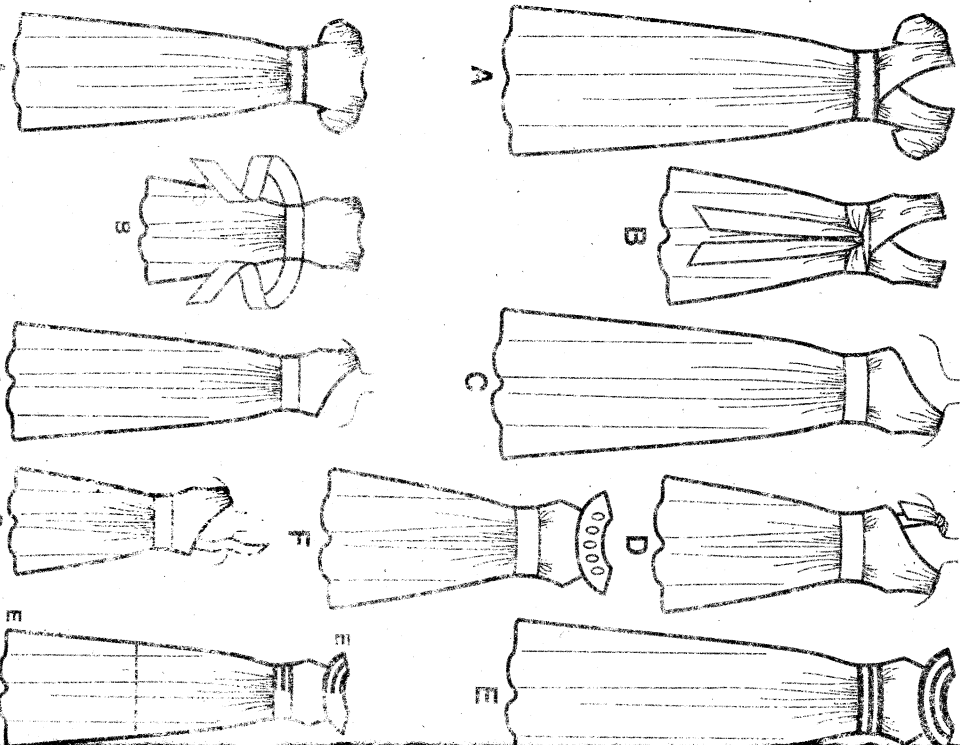


English/Spanish

# Simplicity® 2692

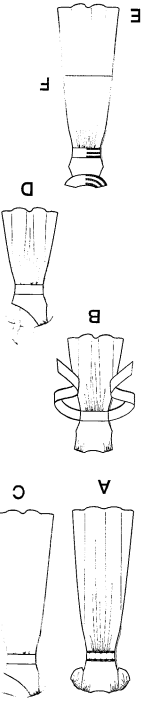
Thank you for purchasing this Simplicity pattern. We have made every effort to provide you with a high quality product. Gracias por haber comprado este patron de Simplicity. Hemos hecho todos los esfuerzos para crearle un producto de alta calidad.



MODIFIED: FB4

**2692**

19 PIECES/PIEZAS  
Métrages et Instructions  
à l'intérieur de l'enveloppe.



MISSSES' DRESS IN TWO LENGTH WITH BODICE VARIATIONS

Notions: Thread, one 14" zipper, Five Large Weave Snaps for Simplicity notions and Wrights® Trims.  
Fabrics: Silks and Silk Types, Charmeuse, Crepe, Laundered Silks-Rayons, Sandwashed Silk, Georgette, Double Georgette, Novelty Knit Fabrics. Extra fabric needed to match plaids, stripes or one-way design fabrics.

Pattern Size	42	44	46	48	50	52	54	56	58	60	62	64	66	68
A Dress	1.2	1.2	1.2	1.2	1.2	1.2	1.2	1.2	1.2	1.2	1.2	1.2	1.2	1.2
B Dress	1.2	1.2	1.2	1.2	1.2	1.2	1.2	1.2	1.2	1.2	1.2	1.2	1.2	1.2
C Dress	1.2	1.2	1.2	1.2	1.2	1.2	1.2	1.2	1.2	1.2	1.2	1.2	1.2	1.2
D Dress	1.2	1.2	1.2	1.2	1.2	1.2	1.2	1.2	1.2	1.2	1.2	1.2	1.2	1.2
E Dress	1.2	1.2	1.2	1.2	1.2	1.2	1.2	1.2	1.2	1.2	1.2	1.2	1.2	1.2
F Dress	1.2	1.2	1.2	1.2	1.2	1.2	1.2	1.2	1.2	1.2	1.2	1.2	1.2	1.2
Novelty Flexible Trim - 6% yd. of % wide	3%	3%	3%	3%	3%	3%	3%	3%	3%	3%	3%	3%	3%	3%
A.C.E. Skirt Lining (opt.) - 2% yd. of 45"	2	2	2	2	2	2	2	2	2	2	2	2	2	2
B.D.F. Skirt Lining (opt.) - 1% yd. of 45"	2	2	2	2	2	2	2	2	2	2	2	2	2	2
E.F. Lining for bodice - % yd. of 45"	2%	2%	2%	2%	2%	2%	2%	2%	2%	2%	2%	2%	2%	2%
F. Lining for bodice - % yd. of 45"	2%	2%	2%	2%	2%	2%	2%	2%	2%	2%	2%	2%	2%	2%
A.C.E. Skirt Lining (opt.) - 2% yd. of 20" to 25" lightweight fusible	2%	2%	2%	2%	2%	2%	2%	2%	2%	2%	2%	2%	2%	2%
E.F. Lining for bodice - % yd. of 20" to 25" lightweight fusible	2%	2%	2%	2%	2%	2%	2%	2%	2%	2%	2%	2%	2%	2%
A.C.E. Skirt Lining (opt.) - 2% yd. of 45"	2	2	2	2	2	2	2	2	2	2	2	2	2	2
B.D.F. Skirt Lining (opt.) - 1% yd. of 45"	2	2	2	2	2	2	2	2	2	2	2	2	2	2
A.B. Bust	33	34	35	36	37	38	39	40	41	42	43	44	45	46
C.D.E.F. Bust	32	33	34	35	36	37	38	39	40	41	42	43	44	45
Finished back length from base of neck	57	56%	56%	57	57%	57%	58	58%	58%	59	59%	59%	60	60%
A.C.E. Dress	56%	56%	56%	57	57%	57%	58	58%	58%	59	59%	59%	60	60%
A.E. Dress	57	56%	56%	57	57%	57%	58	58%	58%	59	59%	59%	60	60%
B.D.F. Dress Width	69	70	71	72	73	74	75	76	77	78	79	80	81	82
B.D.F. Dress Length	55%	56%	57%	58%	59%	60%	61%	62%	63%	64%	65%	66%	67%	68%

JUNE FEMME: ROBE EN DEUX LONGUEURS AVEC CHOIX DE CORSAGES

Tissus: Soies et tissus soyeux, Charmeuse, Crêpe, Soies/Rayons préteintes, Soie lavée au sable, Crêpe Georgette, Crêpe Georgette double, Jerseys Mats, Jersey fantaisie, Prévoquez davantage de tissu pour raccorder les côssais, les rayures ou les motifs unidirectionnels.  
Merceria: Fil, une glissière de 35cm. F: cinq gros boutons, deux la merolite de Simplicity et les garnitures Wrights® Trims.

MESURES NORMALISEES/MEDIDAS DEL CUERPO	42	44	46	48	50	52	54	56	58	60	62	64	66	68
Poitrine/Busto	75	78	81	84	87	90	93	96	99	102	105	108	111	114
Taille/Cintura	56	58	61	64	67	70	73	76	79	82	85	88	91	94
Hanches (23cm au-dessous de la taille)/Caderas (23cm abajo de la talla)	80	83	86	89	92	95	98	101	104	107	110	113	116	119
Dos (encolure à taille)/Espalda (escote a cintura)	38.5	39.5	40.5	41.5	42.5	43.5	44.5	45.5	46.5	47.5	48.5	49.5	50.5	51.5
Tailles-Frangéales	4	6	8	10	12	14	16	18	20	22	24	26	28	30
Tailles-Européennes	30	32	34	36	38	40	42	44	46	48	50	52	54	56
A Robe/ A Vestido	3.20	3.20	3.20	3.20	3.20	3.20	3.20	3.20	3.20	3.20	3.20	3.20	3.20	3.20
B Robe/ B Vestido	2.40	2.40	2.40	2.40	2.40	2.40	2.40	2.40	2.40	2.40	2.40	2.40	2.40	2.40
C Robe/ C Vestido	1.90	2.00	2.10	2.20	2.30	2.40	2.50	2.60	2.70	2.80	2.90	3.00	3.10	3.20
D Robe/ D Vestido	1.50cm**	1.50cm**	1.50cm**	1.50cm**	1.50cm**	1.50cm**	1.50cm**	1.50cm**	1.50cm**	1.50cm**	1.50cm**	1.50cm**	1.50cm**	1.50cm**
E Robe/ E Vestido	1.15cm**	1.15cm**	1.15cm**	1.15cm**	1.15cm**	1.15cm**	1.15cm**	1.15cm**	1.15cm**	1.15cm**	1.15cm**	1.15cm**	1.15cm**	1.15cm**
F Robe/ F Vestido	1.50cm**	1.50cm**	1.50cm**	1.50cm**	1.50cm**	1.50cm**	1.50cm**	1.50cm**	1.50cm**	1.50cm**	1.50cm**	1.50cm**	1.50cm**	1.50cm**
G Doublure du corsage - 0.70m de tissu	2.00	2.00	2.00	2.00	2.00	2.00	2.00	2.00	2.00	2.00	2.00	2.00	2.00	2.00
H Doublure du corsage - 1.00m de tissu	2.80	2.80	2.80	2.80	2.80	2.80	2.80	2.80	2.80	2.80	2.80	2.80	2.80	2.80
I Doublure du corsage - 1.30m de tissu	3.60	3.60	3.60	3.60	3.60	3.60	3.60	3.60	3.60	3.60	3.60	3.60	3.60	3.60
J Doublure du corsage - 1.60m de tissu	4.40	4.40	4.40	4.40	4.40	4.40	4.40	4.40	4.40	4.40	4.40	4.40	4.40	4.40
K Doublure du corsage - 1.90m de tissu	5.20	5.20	5.20	5.20	5.20	5.20	5.20	5.20	5.20	5.20	5.20	5.20	5.20	5.20
L Doublure du corsage - 2.20m de tissu	6.00	6.00	6.00	6.00	6.00	6.00	6.00	6.00	6.00	6.00	6.00	6.00	6.00	6.00
M Doublure du corsage - 2.50m de tissu	6.80	6.80	6.80	6.80	6.80	6.80	6.80	6.80	6.80	6.80	6.80	6.80	6.80	6.80

FINISHED GARMENT MEASUREMENTS (Includes Design and Wearing Ease)	42	44	46	48	50	52	54	56	58	60	62	64	66	68
A.B. Bust	33	34	35	36	37	38	39	40	41	42	43	44	45	46
C.D.E.F. Bust	32	33	34	35	36	37	38	39	40	41	42	43	44	45
Finished back length from base of neck	57	56%	56%	57	57%	57%	58	58%	58%	59	59%	59%	60	60%
A.C.E. Dress	56%	56%	56%	57	57%	57%	58	58%	58%	59	59%	59%	60	60%
A.E. Dress	57	56%	56%	57	57%	57%	58	58%	58%	59	59%	59%	60	60%
B.D.F. Dress Width	69	70	71	72	73	74	75	76	77	78	79	80	81	82
B.D.F. Dress Length	55%	56%	57%	58%	59%	60%	61%	62%	63%	64%	65%	66%	67%	68%

To be used for individual private home use only and not for commercial or manufacturing purposes.