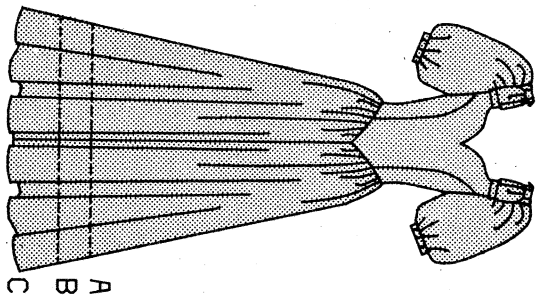


BUTTERICK® 5321

Page 1 (2 pages)



35" (90cm) Yardages	(6)
SIZE/TAILLE	(6)
CONTRAST BODICE (Dress)	1/8
**	1/8
CORSAGE CONTRASTANT	1-1
***	1-1

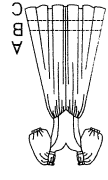
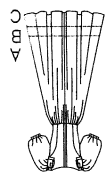
SIZE/TAILLE	2	4
Bust	28 1/2	29
Waist	21	22
Hip	30 1/2	31
Bk. Waist Lgth.	15	15
T. de poitrine	72	75
T. de taille	54	56
T. de hanches	78	80
Nuque à taille	38	39

BUTTERICK PATTERN SERVICE, 161 AVENUE OF THE AMERICAS, NEW YORK 10013 © 1991 BUTTERICK COMPANY, INC. • PRINTED IN U.S.A. ALL RIGHTS RESERVED

MISSES'/MISSES' PETITE DRESS Dress, lower calf, tea or evening length, has cut-in shoulders, semi-fitted, shaped front, dropped waist bodice with side front and side back seams, flared skirt, back zipper, shoulder bows with knots and above elbow sleeves with stiffening at cap and elastic at lower edge. B: contrast bodice. Purchased petticoat. NOTIONS: Dress A,B,C: 22" (55cm) Zipper, 7/8" (22mm) Wide Bias Tape, Seam Binding, 3/4 yd. (0.7m) of 1/4" (6mm) Elastic and Hooks and Eyes. FABRICS: Dress A,B,C: Contrast B: Lt. wt. Broadcloth, Damask, Taffeta, Satin and Pique. Also Velveteen for Contrast B. Unsuitable for obvious diagonals, plaids or stripes. Use nap yardages/layers for pie, shaded or one-way design fabrics. * with nap. ** w/o nap. See Instruction Sheet for 35" (90cm) Yardage.

ROBE (Jeune femme/Petite J. femme) Robe en ajusté (contrastant pour B), à carure moins large, et manches à soutiens aux entournures; boutonnées à élastiques aux bords devant. Juppon fantaisie. MERCERIE: Robe A,B,C: Fermeture à glissière (55cm) - Ruban biais large (22mm) - Extra-fort - 0.7m d'élastique (6mm) - Agrafes - TISSUS: Robe A,B,C, contraste B: Toile fine ultra légère - Dames - Taffetas - Satin - Piqué; plus pour contraste B: Velours de coton. Rayures/grandes diagonales/écossais, ne conviennent pas. * avec sens. ** sans sens. Métrages en 90cm sur les feuillets d'explications de couture.

SIZE	INS	DRESS A	DRESS B	DRESS C	INTERFACING A,B,C	90,115 SOUTIENS-MANCHES A,B,C (tulle)	LARGURS à l'ourlet	LONGUEURS	WIDTHS
(6)	4	60	45	60	5% 4	0.4	340	124	Dress A
(8)	5	65	50	65	5% 5	0.4	340	128	Dress B
(10)	6	70	55	70	5% 6	0.4	340	132	Dress C
(12)	7	75	60	75	5% 7	0.4	340	136	Dress A
(14)	8	80	65	80	5% 8	0.4	340	140	Dress B
(16)	9	85	70	85	5% 9	0.4	340	144	Dress C
(18)	10	90	75	90	5% 10	0.4	340	148	Dress A
(20)	11	95	80	95	5% 11	0.4	340	152	Dress B
(22)	12	100	85	100	5% 12	0.4	340	156	Dress C



U.S. \$7.95
CAN. \$11.95
AUST. \$9.00
N.Z. \$9.95
U.K. BLACK
recommended price
prix suggéré

5321