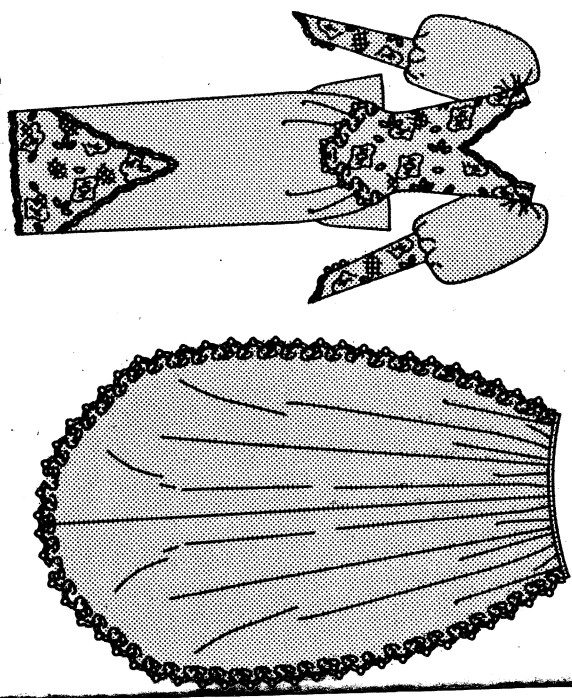


# BUTTERICK 5206

Page 1 (4 pages)



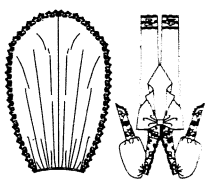
BUTTERICK PATTERN SERVICE, 161 AVENUE OF THE AMERICAS, NEW YORK 10013 © 1990 BUTTERICK COMPANY, INC. • PRINTED IN U.S.A. ALL RIGHTS RESERVED

5206

U.S. \$8.95  
 CAN. \$12.50  
 AUST. \$9.95  
 N.Z. \$9.95  
 U.K. BLACK

recommended price  
 \*prix suggéré

FRONT  
 DEVANT



**ADVANCED** MISSES' DRESS & DETACHABLE TRAIN Lined dress, floor length, has close-fitting, lined, dropped waist, shaped front, contrast bodice with side front and side back seams, straight, front pleated skirt with contrast front and side back bow, knot and hemline slit, long, two-piece sleeves with stiffening elastic, contrast lower section and button/loop, and back zipper and button trim. Lined, detachable train has binding. Purchased from NOTIONS: Dress, Train: 12" (30cm) zipper, 1/2 yd (0.5m) of 1/2" (6mm) Elastic, Two Pkgs. Seam Binding, Hooks and Eyes, Feet, 1/2" (10mm) Half Ball Buttons or Buttons-to-Cover (optional), 1/2" (6mm) of 1/2" (38mm) Double Edge Scalloped Lace and 1/2" (6mm) of 1/2" (38mm) Silk Cording.

**FABRICS:** Dress, Train: Satin, Taffeta, Gazar, Moiré and Peau de Soie. Contrast: Double Edge Scalloped Lace. Lining: China Silk. **STEVE STIFFENING, BOW, SLEEVE UNDERLINING:** Stiff Netting. **UNUSABLE** for obvious diagonals, plaids or stripes. Use nap yard-ages/layouts for pleat, shaded or one-way design fabrics. \* with nap. \*\* w/o nap.

| INS                                                                    | 8     | 10    | 12    | 14    | 16    | 18    |
|------------------------------------------------------------------------|-------|-------|-------|-------|-------|-------|
| DRESS & DETACHABLE TRAIN                                               | 8 1/2 | 8 1/2 | 8 1/2 | 8 1/2 | 8 1/2 | 8 1/2 |
| 45"                                                                    | 8 1/2 | 8 1/2 | 8 1/2 | 8 1/2 | 8 1/2 | 8 1/2 |
| 60"                                                                    | 6     | 6     | 6     | 6     | 6     | 6     |
| CONTRAST BODICE, LOWER SLEEVES & APPLIQUE (Double Edge Scalloped Lace) | 2%    | 2%    | 2%    | 2%    | 2%    | 2%    |
| 36"                                                                    | 2%    | 2%    | 2%    | 2%    | 2%    | 2%    |
| 45"                                                                    | 2 1/2 | 2 1/2 | 2 1/2 | 2 1/2 | 2 1/2 | 2 1/2 |
| 45"                                                                    | 3%    | 3%    | 3%    | 3%    | 3%    | 3%    |
| 90"                                                                    | 2 1/2 | 2 1/2 | 2 1/2 | 2 1/2 | 2 1/2 | 2 1/2 |
| 115"                                                                   | 2 1/2 | 2 1/2 | 2 1/2 | 2 1/2 | 2 1/2 | 2 1/2 |
| DOUBLURE                                                               | 2 1/2 | 2 1/2 | 2 1/2 | 2 1/2 | 2 1/2 | 2 1/2 |
| 115"                                                                   | 2 1/2 | 2 1/2 | 2 1/2 | 2 1/2 | 2 1/2 | 2 1/2 |
| TRIPLEUR (soutens des manches, noeud, tripleur des manches)            | 1.3   | 1.3   | 1.3   | 1.3   | 1.3   | 1.3   |
| 180 tube                                                               | 1.3   | 1.3   | 1.3   | 1.3   | 1.3   | 1.3   |
| LARGURS à l'ourlet                                                     | 91    | 94    | 96    | 99    | 104   | 109   |
| 114                                                                    | 109   | 104   | 99    | 96    | 104   | 109   |
| LONGUEURS dos, votre nuque à l'ourlet                                  | 147   | 147   | 148   | 149   | 149   | 150   |
| robe dos, taille à ourlet                                              | 146   | 147   | 148   | 149   | 149   | 150   |
| 188                                                                    | 188   | 188   | 188   | 188   | 188   | 188   |
| 188                                                                    | 188   | 188   | 188   | 188   | 188   | 188   |

**CM ROBE & TRAIN AMOVIBLE**  
 150" 7.8 7.8 7.8 7.8 7.8 7.8  
 115" 5.4 5.5 5.5 5.5 5.5 5.5  
**DENTELLE CONTRASTANTE A BORDS FESTONNES (corsage)**  
 90" 2.4 2.6 2.6 2.6 2.6 2.6  
**manches inférieures, applique)**  
 115" 2.1 2.2 2.2 2.2 2.2 2.2  
**DOUBLURE**  
 115" 2.1 2.2 2.2 2.2 2.2 2.2  
 6.3 5.8 6.2 6.2 6.2 6.2 6.3  
**TRIPLEUR (soutens des manches, noeud, tripleur des manches)**  
 1.3 1.3 1.3 1.3 1.3 1.3 1.3

**FINISHED BACK FROM BASE OF YOUR NECK**  
 58% 58% 58% 58% 58% 58% 58%  
 59 59 59 59 59 59 59  
**FINISHED BACK FROM WAIST**  
 74 74 74 74 74 74 74  
**LENGTHS**  
 114 109 104 99 96 104 109  
**WIDTHS**  
 36 37 38 39 41 43 45  
**DRESS**  
 74 74 74 74 74 74 74  
**FINISHED BACK FROM WAIST**  
 188 188 188 188 188 188 188  
**TRAIN**

**FRONT**  
 188 188 188 188 188 188 188  
**DETAILED DESCRIPTION:**  
 au sol toute doublée (sauf les manches) fermée dos par brides/boutons et zip, avec corsage ajusté contrastant à coutures galbanes et manches longues deux-pièces à soutiens et élastiques à mi-bras, fermées par brides/boutons aux poignets, partie inférieure contrastante; jupe droite montée en découpé devant dans taille basse, avec devant plissé et applique contrastante, grand noeud dos à coulant et haute fente à l'ourlet dos. Train doublée amovible bordée. Garniture.  
**MERCERIE:** Robe, train: Fermeture à glissière (30cm) - 0.5m d'élastique (6mm) - 2 paquets d'extra-fort - Agrafes - 15 boutons demi-boutons ou boutons à recouvrir (facultatifs) - 6.4m de dentelle à bords festonnés (38mm) - 0.3m de gaze de soie (3mm).  
**TRSSUS:** Robe, train: Satin - Taffetas - Gazar - Moiré - Peau de soie. **CONTRASTE:** Dentelle à bords festonnés. **DOUBLURE:** Japonette. **SOUTENS** diagonales/écossais, ne conviennent pas. \* avec sens \*\* sans sens.