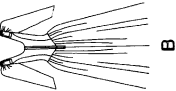
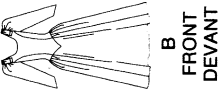
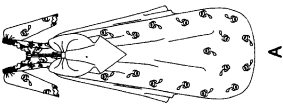
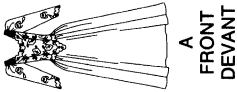


U.S. **\$5.95**
 CAN. **\$7.75**
 AUST. ***\$6.95**
 N.Z. ***\$7.15****
 *incl. C.S.T.
 **recommended price
 prix suggéré



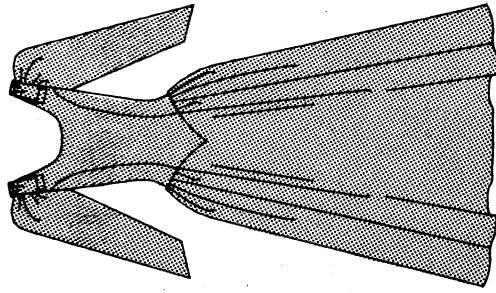
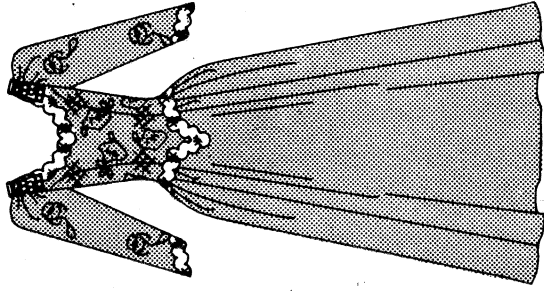
MISSES'/MISSES' PETITE DRESS Dress, above ankle or floor length, has lined, fitted, dropped waist, shaped bodice with side front and side back seams, shoulder bows with knot, flared skirt with pleated and gathered waist, side front and side back seams (no side seams), back zipper and below elbow sleeves with stiffening at cap and shaped at lower edge. A: shaped back hemline, attached train and tucked and gathered bow with knot, contrast, and purchased trim and veil.
NOTIONS: 14" (35cm) Zipper, 2 Pkgs. Seam Binding, Snaps and Hooks and Eyes.
FABRICS: Lt.wt. Satin, Lt.wt. Peau de Soie, Lt.wt. Taffeta and Damask, Reembroidered Lace for **Bodice A**, Appliques. Unsuitable for obvious diagonals or uneven plaids. Allow extra fabric to match even plaids or stripes. Use nap yardages/layouts for pile, shaded or one-way design fabrics. * with nap. ** w/o nap.

ROBE (Jeune femme/Petite J.femme) Robe au-dessus de la cheville ou au sol, avec corsage ajusté doublé à coutures galbantes, nœuds aux épaules et manches au-dessous des coudes avec soutiens et bords inférieurs en découpe, jupe montée à fronces dans taille basse en découpe, coutures devant/dos et zip dans le dos. A: dos avec ourlet arrondi formant traine, plissé et froncé dans nœud géant, contraste, garniture et voile.
MERCERIE: Fermeture à glissière (35cm) - 2 paquets d'extra-fort - Boutons-pression - Agrafes.
TISSUS: Damas - Satin, peau de soie, taffetas légers. **Corsage A**, appliques: Dentelle rebrédée. Grandes diagonales ou écossais irréguliers ne conviennent pas. Compte non tenu des raccords de rayures/carreaux réguliers. * avec sens ** sans sens.

		TAILLE (8 10 12) (14 16 18)										
		INS CM										
DRESS A	10½	10½	10% 10%	52**132	ROBE A							
	9½	9½	9% 9%	60 * 150	9.6 9.6 9.6 9.8 9.8 9.8 9.9							
	8% 8¼	8% 9	8% 9% 9¼	60 ** 150	8.7 8.7 8.8 9.0 9.0 9.1							
CONTRAST BODICE & APPLIQUES		2	2	2 2½	2 2	7.9 8.0 8.2 8.3 8.4 8.5						
1¼	1¼	1¾	1¾	35 * 90	APPLIQUE							
1¾	1¾	1¾	1¾	54 * 140	1.9 1.9 1.9 1.9 1.9 2.0 2.0							
3¼	3¾	3¾	3¾	60 * 150	1.6 1.6 1.6 1.6 1.6 1.6 1.6							
SCALLOPED EDGE TRIM		1½	3¾	38mm	GARNITURE A BORD FESTONNE							
3¼	3¾	3¾	3¾	3%	3.0 3.1 3.2 3.4 3.5 3.6							
SEQUIN RICK-RACK		¾	¾	20mm	CROQUET PAILLETTE							
¾	¾	¾	¾	¾	3.6 3.6 3.6 3.6 3.6 3.6							
UNDERLINING, LINING & SLEEVE STIFFENING (organza)		50	127	4.2 4.2 4.2 4.2 4.2 4.2	MANCHES (organza)							
4½	4½	4½	4½	4.2 4.2 4.2 4.2 4.2 4.2	TRIPLEURE DOUBLURE & SOUTIENS							
DRESS B		45	115	45	4.2 4.2 4.2 4.2 4.2 4.2							
5¾	5¾	6¾	6¾	45**115	ROBE B							
4½	4½	4¾	4¾	5.3 5.4 5.6 5.6 5.8 5.9	5.3 5.4 5.6 5.6 5.8 5.9							
4¼	4¼	4¾	4¾	60 * 150	4.2 4.2 4.3 4.3 4.3 4.4							
4¼	4¼	4¾	4¾	60 ** 150	3.8 3.8 3.9 4.0 4.3 4.4							
SLEEVE STIFFENING (Organza)		¾	¾	45 115	SOUTIENS-MANCHES (organza)							
½	½	¾	¾	0.5 0.5 0.5 0.6 0.6 0.6	0.5 0.5 0.5 0.6 0.6 0.6							
BODICE LINING A,B		1	1	0.8 0.8 1.0 1.0 1.0 1.1	DOUBLURE DE CORSAGE A,B							
¾	¾	1	1	0.8 0.8 1.0 1.0 1.0 1.1	0.8 0.8 1.0 1.0 1.0 1.1							
Lower edge (excl. train)		WIDTHS		LARGEURS								
202	203	204	206	208	210	Dress	A	513	515	518	523	à l'ourlet (traine exclue)
161	162	163	165	167	169	Dress	B	409	411	414	419	(traine exclue)
Finished back from base of neck (excl. train)		LENGTHS		LONGUEURS		robe	A	200	201	201	202	nuque à ourlet (traine exclue)
50%	51	79¼	79½	79¾	80	Dress	B	129	130	130	131	131 132
		51¼	51½	51¾	52	Dress	B	129	130	130	131	131 132

BUTTERICK 4743

Page 1 (5 pages)



NOTE:
 THIS PATTERN CAN BE ADJUSTED FOR MISS PETITE SIZES. FOLLOW DIRECTIONS ON PATTERN TISSUE.