

**MEN'S JACKET, SHIRT AND BOW TIE Circa 1914:** Loose-fitting, lined, below-hip length jacket has contrast collar, cuffs, mock welt and pocket bands, pockets, shoulder pads and long, two-piece sleeves. Loose-fitting shirt has self-fabric or contrast collar and collar band, front and sleeve plackets and openings, buttoned pocket and cuff. Bow tie is adjustable. **NOTIONS:** Jacket: 1/2" Shoulder Pads and Three 7/8" Buttons. Shirt A, B: Seven 3/4" Buttons. **Bow Tie:** One 3/4" Bow Tie Set.

**FABRICS:** Jacket: Velvet and Wool. **Shirt A, B:** Cotton and Linen. **Shirtings:** **Bow Tie:** Silk, Ottoman and Satin. Unsuitable for obvious diagonals or uneven plaids. Allow extra fabric to match even plaids or stripes. Use nap yardages/layouts for pils, shaded or one-way design fabrics. \*with nap. \*\*without nap.

**MULTI-SIZED FOR CUSTOM FIT**

SIZES	(S)	(M)	(L)	(XL)
	(34-36)	(38-40)	(42-44)	(46-48)
<b>JACKET</b>	2 1/2	2%	3	3
45"/**	1%	1%	2	2
60"/**	1%	1%	1 1/4	1 1/4
CONTRAST (Collar, Welt, Pocket Band and Cuffs)	1%	1%	1 1/4	1 1/4
45"/**	1%	1%	1 1/4	1 1/4
60"/**	1%	1%	1 1/4	1 1/4
<b>SEW-IN INTERFACING (Jacket)</b>	1%	1%	1 1/4	1 1/4
36", 45"	1%	1%	1 1/4	1 1/4
<b>LINING (Jacket)</b>	1%	1%	2 1/4	2 1/2
45"/**	2%	2%	3	3 1/4
60"/**	1%	1%	2 1/2	2 1/2
<b>SHIRT A</b>	2%	2%	3	3 1/4
45"/**	1%	1%	2 1/2	2 1/2
60"/**	2%	2%	2 1/4	2 1/4
45"/**	1%	1%	1 1/4	1 1/4
60"/**	1%	1%	1 1/4	1 1/4
<b>CONTRAST B (Collar)</b>	1/4	1/4	1/4	1/4
45", 60"/**	%	%	%	%
<b>SEW-IN INTERFACING A, B</b>	36", 45"	%	%	1/2
36", 45"	1/2	1/2	1/2	1/2
<b>BOW TIE</b>	45", 60"/**	1/2	1/2	1/2
45", 60"/**	1/2	1/2	1/2	1/2
<b>SEW-IN INTERFACING (Bow Tie)</b>	36", 45"	1/2	1/2	1/2
36", 45"	1/2	1/2	1/2	1/2

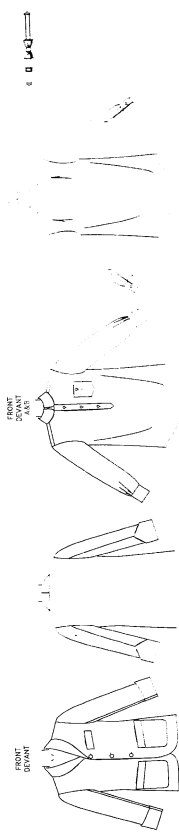
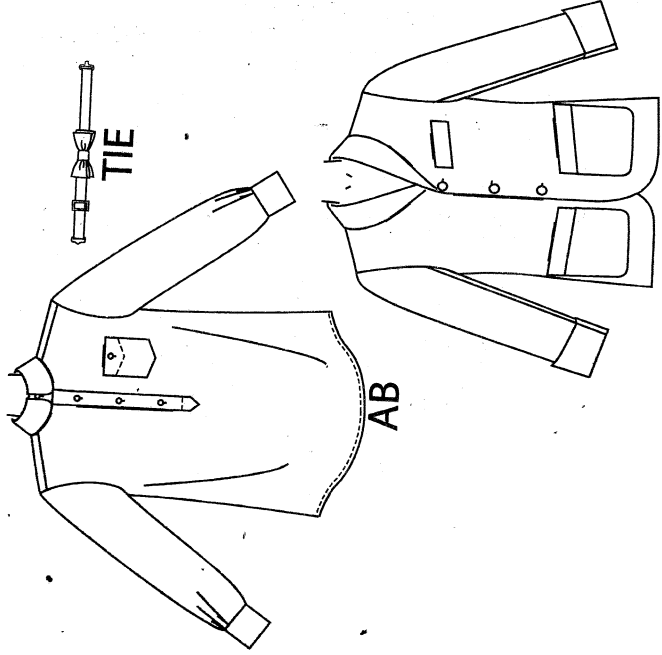
PRINTED IN U.S.A. ALL RIGHTS RESERVED. SOLD FOR INDIVIDUAL HOME USE ONLY AND NOT FOR COMMERCIAL OR MANUFACTURING PURPOSES. RESERVE A UN USAGE PERSONNEL.

**VESTES, CHEMISE ET NEUD PAPILLON (HOMME) Environ 1914:** Veste ample, doublée, au-dessous des hanches avec col, poignets, fausses bordures et bandes de poches en contraste, poches, épaulettes et manches longues en deux pièces. Chemise ample avec col et bande de col en contraste ou du même tissu, ouvertures à double patte au devant et à la manche, poche et poignet boutonnés. Neud papillon réglable. **MERCERIE:** Veste: Epaulettes (13mm) et 3 Boutons (22mm). **Chemise A, B:** 7 Boutons (15mm). **Neud Papillon:** 1 jeu de Neud Papillon (20mm). **TISSUS:** Veste: Velours et Laine. **Chemise A, B:** Shirtings de Coton et de Lin. **Neud Papillon:** Soie, Ottomane et Satin. Grandes diagonales ne conviennent pas. Complète non tenu des raccords de rayures/carreaux. \*avec sens. \*\*sans sens.

**MULTI-TAILLES/A VOS MESURES**

TAILLES	(P)	(M)	(G)	(TG)
	(34-36)	(38-40)	(42-44)	(46-48)
<b>VESTE</b>	2.30	2.40	2.80	2.80
115cm/**	1.80	1.80	1.90	1.90
150cm/**	1.20	1.20	1.20	1.30
<b>CONTRASTE (Col, Bordure, Blande de Poche et Poignets)</b>	1.10	1.10	1.10	1.20
115cm/**	1.10	1.10	1.10	1.20
150cm/**	1.10	1.10	1.10	1.20
<b>ENTOILAGE A COUDRE (Veste)</b>	1.80	1.80	2.10	2.30
90, 115cm	2.20	2.70	2.80	3.00
<b>DOUBLURE (Veste)</b>	1.60	1.80	2.00	2.00
115cm**	2.20	2.20	2.60	2.80
<b>CHEMISE A</b>	1.50	1.60	1.80	1.90
115cm**	0.25	0.25	0.25	0.25
<b>CHEMISE B</b>	0.35	0.35	0.35	0.50
115, 150cm**	0.50	0.50	0.50	0.50
<b>CONTRASTE B (Col)</b>	0.50	0.50	0.50	0.50
115, 150cm**	0.50	0.50	0.50	0.50
<b>ENTOILAGE A COUDRE A, B</b>	1.24	1.17	1.35	1.45
90, 115cm	1.07	1.17	1.27	1.37
<b>NEUD PAPILLON</b>	115, 150cm*	117	127	137
115, 150cm*	117	127	137	137
<b>ENTOILAGE A COUDRE (Neud Papillon)</b>	115, 150cm	117	127	137
90, 115cm	117	127	137	137
<b>LARGEURS - à l'ourlet</b>	115	117	127	137
Veste	115	117	127	137
Chemise A, B	117	127	137	137
<b>LONGUEURS - dos, votre nuque à l'ourlet</b>	115	117	127	137
Veste	77	79	80	81
Chemise A, B	80	81	83	84

PRINTED IN U.S.A. ALL RIGHTS RESERVED. SOLD FOR INDIVIDUAL HOME USE ONLY AND NOT FOR COMMERCIAL OR MANUFACTURING PURPOSES. RESERVE A UN USAGE PERSONNEL.



FRONT  
D'AVANT