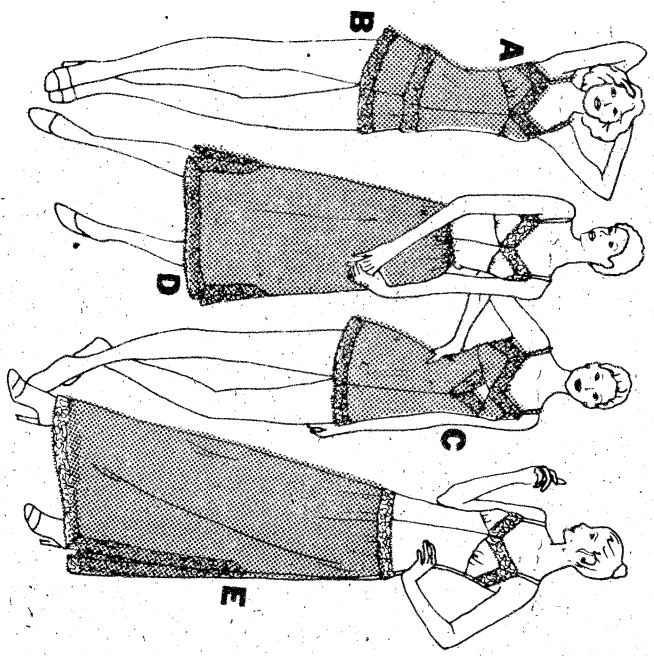


Butterick 4020

Page 1
(of 3 Pages)



PREP

Select
Butter
allow

If bo
make
Length
or wh

TO L
lines.
need

TO S
Make
short
Press

USE P

35" (9
FABRI
WITH
ALL S

4020 MISSES' CAMISOLE, SHORTS, BODYSUIT & HALF-SLIP

Semi-fitted high waisted camisole has V neckline, and purchased ribbon shoulder straps. Boxy shorts has elasticized waistline. Semi-fitted high waisted bodysuit has V neckline, purchased ribbon shoulder straps, cut-away midriff. Half slip from midline, 110 cm below mid knee, and in ankle length has elasticized waistband and side boneline slips. All have plain backed lay flat front.

BODY MEASUREMENTS

	Inches	38	40
Bust	31 1/2	32 1/2	34
Waist	24	25	26 1/2
Hip	33 1/2	34 1/2	36
Back Waist Length	15 1/4	16	16 1/4

BUST	31 1/2	32 1/2	34	36	38
SIZE	8	10	12	14	16

CAMISOLE A

35" * / * *	1 1/8	1 1/8	1 1/8	1 1/4	1 1/4
44/45" * / * *	1 1/8	1 1/8	1 1/8	1 1/4	1 1/4
60" * / * *	1 1/8	1 1/8	1 1/8	1 1/4	1 1/4
1 3/4" Double Edge Scalloped Lace	2 1/2	2 1/2	2 1/2	2 1/2	2 1/2

SHORTS B

35" * / * *	1 1/8	1 1/8	1 1/8	1 1/4	1 1/4
44/45" * / * *	1 1/8	1 1/8	1 1/8	1 1/4	1 1/4
60" * / * *	1 1/8	1 1/8	1 1/8	1 1/4	1 1/4
1 3/4" Double Edge Scalloped Lace	2 1/2	2 1/2	2 1/2	2 1/2	2 1/2

BODYSUIT C

35" * / * *	1 1/8	1 1/8	1 1/8	1 1/4	1 1/4
44/45" * / * *	1 1/8	1 1/8	1 1/8	1 1/4	1 1/4
60" * / * *	1 1/8	1 1/8	1 1/8	1 1/4	1 1/4
1 3/4" Double Edge Scalloped Lace	2 1/2	2 1/2	2 1/2	2 1/2	2 1/2

HALF-SLIP D

35" * / * *	1 1/8	1 1/8	1 1/8	1 1/4	1 1/4
44/45" * / * *	1 1/8	1 1/8	1 1/8	1 1/4	1 1/4
60" * / * *	1 1/8	1 1/8	1 1/8	1 1/4	1 1/4
1 3/4" Double Edge Scalloped Lace	2 1/2	2 1/2	2 1/2	2 1/2	2 1/2

HALF-SLIP E

35" * / * *	1 1/8	1 1/8	1 1/8	1 1/4	1 1/4
44/45" * / * *	1 1/8	1 1/8	1 1/8	1 1/4	1 1/4
60" * / * *	1 1/8	1 1/8	1 1/8	1 1/4	1 1/4
1 3/4" Double Edge Scalloped Lace	2 1/2	2 1/2	2 1/2	2 1/2	2 1/2

BUST	40	40 1/2	41 1/2	42
SIZE	8	9	10	11

CAMISOLE A

90cm * / * *	1.10	1.10	1.10	1.10
115cm * / * *	0.80	1.00	1.00	1.00
150cm * / * *	0.60	0.60	0.70	0.70
45mm Double Edge Scalloped Lace	2.30	2.40	2.60	2.70

SHORTS B

90cm * / * *	1.10	1.10	1.20	1.20
115cm * / * *	0.80	1.00	1.00	1.00
150cm * / * *	0.80	0.80	0.80	1.00
45mm Double Edge Scalloped Lace	1.90	1.90	1.60	1.80

BODYSUIT C

90cm * / * *	1.60	1.30	1.30	2.00
115cm * / * *	1.30	1.30	1.30	1.40
150cm * / * *	1.00	1.00	1.00	1.10
45mm Double Edge Scalloped Lace	3.20	3.40	3.40	3.50

HALF-SLIP D

90cm * / * *	1.60	1.60	1.60	1.60
115cm * / * *	1.60	1.60	1.60	1.60
150cm * / * *	1.10	1.30	1.60	1.60
45mm Double Edge Scalloped Lace	0.80	0.80	0.80	1.00

HALF-SLIP E

90/115cm * / * *	2.20	2.20	2.20	2.20
150cm * / * *	1.20	1.20	1.20	1.20
45mm Double Edge Scalloped Lace	3.70	3.70	3.80	3.90



NOTIONS: Camisole A: 1 1/2 yds. of 1/4" Grosgrain Ribbon. Shorts B: 1/2 yd. of 1/2" Elastic. Bodysuit C: 1/2 yd. of 1/4" Snap Tape (with snaps 1" apart) and 1 1/2 yds. of 1/4" Grosgrain Ribbon. Half-Slip D or E: 3/4 yd. of 1/2" Elastic.

* with nap, shading, pile or one-way design.
** without nap, shading or pile or with a two-way design.

Obvious diagonal fabrics are not suitable. For one-way design: use nap yardage and nap layout. Allowance for matching plaid and stripes not included in yardages given.

FABRICS: Soft fabrics such as Jersey, Tricot, Satin, Broadcloth and Batiste.

* Recommended price

BUTTERICK PATTERN SERVICE, 161 SIXTH AVENUE, NEW YORK, NEW YORK 10013
LONDON • TORONTO • SYDNEY PRINTED IN U.S.A.